

Minda Disability Enterprises



UPDATE

Autumn 2010

- > Are you in your last year of school?
- > Looking for work experience?
- > Wanting to try something new?
- > Having trouble finding employment?
- > Interested in attending a day placement?
- > Not quite ready for open employment?

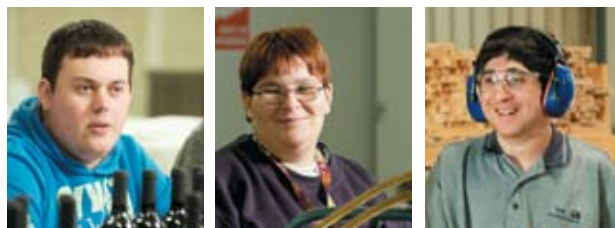
**If this sounds like you or someone you know,
Minda might be just what you are looking for!**

Sometimes people want a change. They no longer enjoy their work and want to try something different. At Minda, we understand this and we strive to make sure the people we support are given every opportunity to explore the options available to them, be it through supporting people initially to find the job they want, looking at open employment or changing the job in which they are currently employed.

Everything we do at Minda is aimed at increasing employment opportunities, life skills, self-esteem and confidence of individuals with a disability.

Minda provides a variety of supported employment opportunities both at the Brighton site and within the community, at locations such as Lonsdale (Minda Packaging Services and Trak Furniture), Craigburn (nursery) and Somerton Park (Minda Packaging Services).

In each of these areas there are different skills learnt and utilised. Minda can also help direct you to service providers for open employment



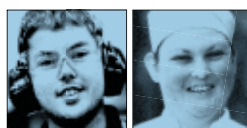
**Employment is available to
people with a disability who:**

- > Are seeking employment
- > Are over 16 years of age
- > Are eligible for the disability support pension
- > Are able to work at least 8 hours per week

Work experience/transition to supported employment can be arranged for final year school students.

Supported employment offers individuals the opportunity to contribute their skills and abilities as part of the workforce. Employees receive a wage and are able to learn new skills and build their confidence, self esteem and status within the community.

**Contact Aaron Byrne, Developmental Educator,
on 0400 625 460 to arrange a meeting and work
site visit.**



**Australian
Disability
Enterprises**
More than just good business

We Can Do It

Minda Disability Enterprises

Transitions from school, to Day Options, to work

Sometimes when students leave school, they may not be prepared or ready to enter the workforce. A Day Options program may be what is needed to acclimatise to life after school, or to balance their working week. A supported employment setting where this has been achieved is Envirocare.

Envirocare

Envirocare offers supported employment opportunities in garden maintenance to Minda's Brighton site, community residential settings and Holdfast Bay council.

The services provided by Envirocare offer general garden, grounds and property maintenance, which includes mowing (manual and "ride on" lawn mowers), weeding, raking, trimming and pruning. Other occasional tasks include assisting with furniture or fixtures removals and accompanying trades or handy persons on minor repair requests and deliveries.

Work Crew One (the original Envirocare group) manage the recycling needs of the organisation by collecting, sorting and dispatching recyclable materials from all campus and community facilities. Another role of this group is to monitor and clean litter from the foreshore between Glenelg and Marino as part of a contract with the local council.

Work Crew Two provides general garden and property maintenance service including mowing lawns, weeding and minor repairs. Training and safe operation in the use and care of various equipment or tools is provided e.g. garden blowers, whipper snippers, mowers.

Envirocare operates between the hours of 7.30am and 3.30pm, Monday to Friday.



Anthony has been attending Minda's Day Options program, Future Directions, four days a week whilst working one day as part of the Envirocare crew.

Anthony said he was pleased to have this opportunity, as initially he found it difficult to find a service that offered him what he needed: the opportunity to work one day a week and also attend a Day Options program.

Anthony said he really enjoys the work he does at Envirocare, "Especially working with the supervisor, Ernie, and mowing the lawn". He added that whilst he does have a passion for work, at the moment he prefers working only one day because he has fun participating in the Future Directions activities.

Recently, Anthony has been attending Certificate I in Community Services on Tuesdays at the South Australian Learning Centre. Anthony has learnt numerous work skills through the course, including how to answer the phone, what to wear to work and tips to improve his communication. "I really enjoy doing the course as it is fun and I get to learn new things that help me at work and at my day placement," Anthony said.

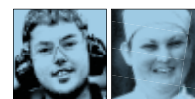


Jack has been attending Future Directions since he finished school, two years ago.

Initially he wanted to work in laundry services but after undertaking work experience there, felt it was not the right job for him. After spending some time in the Future Directions program and adjusting to life after school, Jack expressed an interest in working with the Envirocare crew. At first he trialled one morning per week, as an extension of his Day Options work skill development program.

As he became more confident in both his role and with the tasks required of him, Jack was able to increase his hours and recently achieved his goal of being a part time worker with Envirocare. In terms of what he likes about the job, Jack said, "I like being able to earn my own money and would eventually like to build up to doing two full days of work a week."

Jack said he is still glad to be able to attend the Future Directions program at the end of his morning's shift with Envirocare, as he is able to participate in less physical activities in conjunction with work. Like Anthony, Jack has also been attending the Certificate I. "The course has helped me learn about what is expected at work and how to work with others," he said.



Australian Disability Enterprises
More than just good business

For more information on Minda's Disability Enterprises, contact:

- | | | | |
|--------------------------------------|------------------|---|------------------|
| > Trak Furniture | 8382 9599 | > Craigburn Nursery | 8278 8229 |
| 16 Aldershot Road, Lonsdale SA 5160 | | 36 Fergusson Avenue, Craigburn Farm SA 5051 | |
| > Minda Brighton Campus | 8422 6200 | > Minda Packaging Services | |
| King George Avenue, Brighton SA 5048 | | MPS Lonsdale | 8326 2900 |
| > Laundry Services | 8422 6398 | 10 Sheriffs Road, Lonsdale SA 5160 | |
| > Envirocare | 8422 6200 | MPS Somerton Park | 8296 9054 |
| > Catering Services | 8422 6200 | 16 Bowker Street, Somerton Park SA 5044 | |
| > Cleaning Crew | 8422 6200 | | |

Visit www.mindainc.com.au for more information about what Minda's Disability Enterprises offers you!